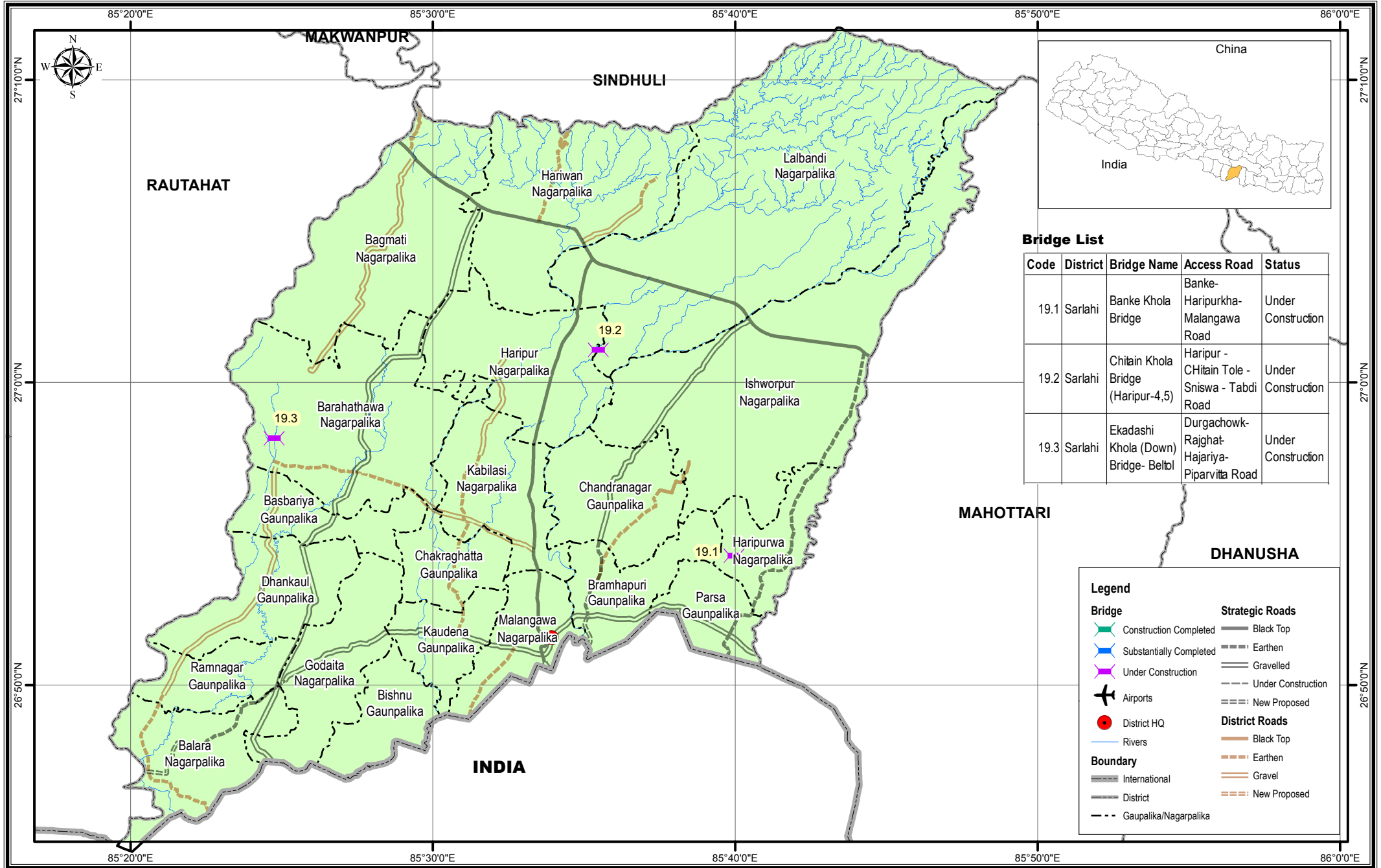


# Bridge Inventory Map

# Sarlahi District



### Bridge List

Code	District	Bridge Name	Access Road	Status
19.1	Sarlahi	Banke Khola Bridge	Banke-Haripurkha-Malangawa Road	Under Construction
19.2	Sarlahi	Chitain Khola Bridge (Haripur-4,5)	Haripur - CHitain Tole - Sniswa - Tabdi Road	Under Construction
19.3	Sarlahi	Ekadashi Khola (Down) Bridge- Beltol	Durgachowk-Rajghat-Hajariya-Piparvitta Road	Under Construction

### Legend

- |                         |                        |
|-------------------------|------------------------|
| <b>Bridge</b>           | <b>Strategic Roads</b> |
| Construction Completed  | Black Top              |
| Substantially Completed | Earthen                |
| Under Construction      | Gravelled              |
| Airports                | Under Construction     |
| District HQ             | New Proposed           |
| Rivers                  | <b>District Roads</b>  |
| International           | Black Top              |
| District                | Earthen                |
| Gaunpalika/Nagarpalika  | Gravel                 |
|                         | New Proposed           |



Local Roads Bridge Support Unit (LRBSU)  
Manbhawan, Lalitpur

Date: 5/3/2018