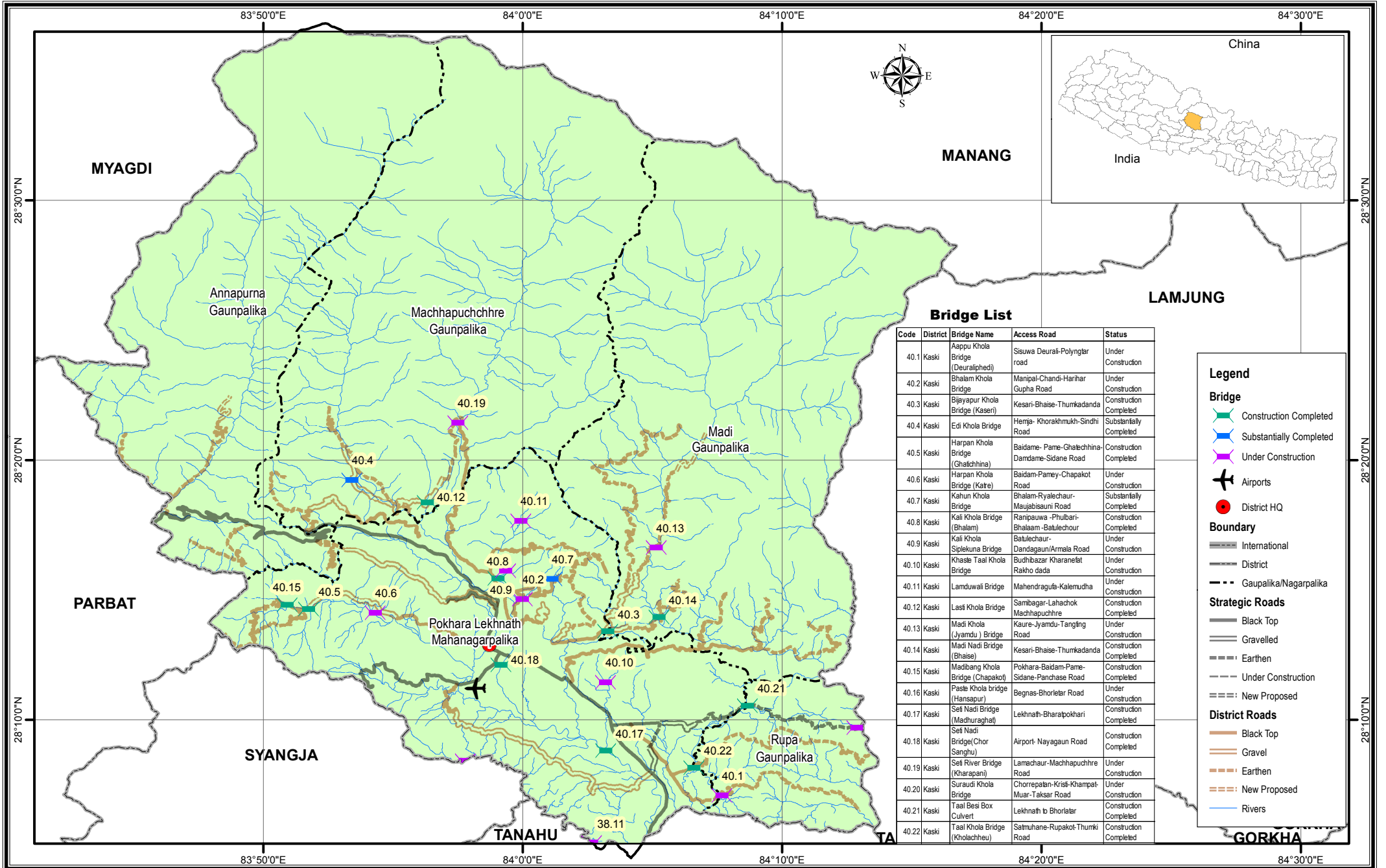


Bridge Inventory Map

Kaski District



Bridge List

Code	District	Bridge Name	Access Road	Status
40.1	Kaski	Aappu Khola Bridge (Deuraliphe)	Sisuwa Deurali-Polyngar road	Under Construction
40.2	Kaski	Bhalam Khola Bridge (Kaseri)	Manipal-Chandi-Harihar Gupha Road	Under Construction
40.3	Kaski	Bijayapur Khola Bridge (Kaseri)	Kesari-Bhaise-Thumkadanda Road	Construction Completed
40.4	Kaski	Edi Khola Bridge	Hemja-Khorakmukh-Sindhi Road	Substantially Completed
40.5	Kaski	Harpan Khola Bridge (Ghalchhina)	Baidame-Pame-Ghatechhina-Damdame-Sidane Road	Construction Completed
40.6	Kaski	Harpan Khola Bridge (Katre)	Baidam-Pamey-Chapakot Road	Under Construction
40.7	Kaski	Kahun Khola Bridge	Bhalam-Ryalechaur-Maujabisuani Road	Substantially Completed
40.8	Kaski	Kali Khola Bridge (Bhalam)	Ranipaawa-Phulbari-Bhalam-Batulechour	Construction Completed
40.9	Kaski	Kali Khola Siplekuna Bridge	Batulechaur-Dandagaun/Armla Road	Under Construction
40.10	Kaski	Khasle Taal Khola Bridge	Budhbazar Kharanelat Rakho dada	Under Construction
40.11	Kaski	Lamduwali Bridge	Mahendragula-Kalemudha	Under Construction
40.12	Kaski	Lasti Khola Bridge	Sambagar-Lahachok Machhapuchhre	Construction Completed
40.13	Kaski	Madi Khola (Jyambu) Bridge	Kaure-Jyambu-Tangling Road	Under Construction
40.14	Kaski	Madi Nadi Bridge (Bhaise)	Kesari-Bhaise-Thumkadanda	Construction Completed
40.15	Kaski	Madibang Khola Bridge (Chapakot)	Pokhara-Baidam-Pame-Sidane-Panchase Road	Construction Completed
40.16	Kaski	Paste Khola bridge (Hansapur)	Begnas-Bhorleter Road	Under Construction
40.17	Kaski	Seti Nadi Bridge (Madhuraghat)	Lekhnath-Bharatpokhari	Construction Completed
40.18	Kaski	Seti Nadi Bridge (Chor Sanghu)	Airport-Nayagaun Road	Construction Completed
40.19	Kaski	Seti River Bridge (Kharapani)	Lamachaur-Machhapuchhre Road	Under Construction
40.20	Kaski	Suraudi Khola Bridge	Chorrepatan-Kristi-Khampat-Muar-Taksar Road	Under Construction
40.21	Kaski	Taal Besi Box Culvert	Lekhnath to Bhorlatar	Construction Completed
40.22	Kaski	Taal Khola Bridge (Kholachheu)	Satmuhane-Rupakot-Thunki Road	Construction Completed

Legend

Bridge

- Construction Completed
- Substantially Completed
- Under Construction

Airports

- Airports

District HQ

- District HQ

Boundary

- International
- District
- Gaunpalika/Nagarpalika

Strategic Roads

- Black Top
- Gravelled
- Earthen
- Under Construction
- New Proposed

District Roads

- Black Top
- Gravel
- Earthen
- New Proposed

Rivers

- Rivers

