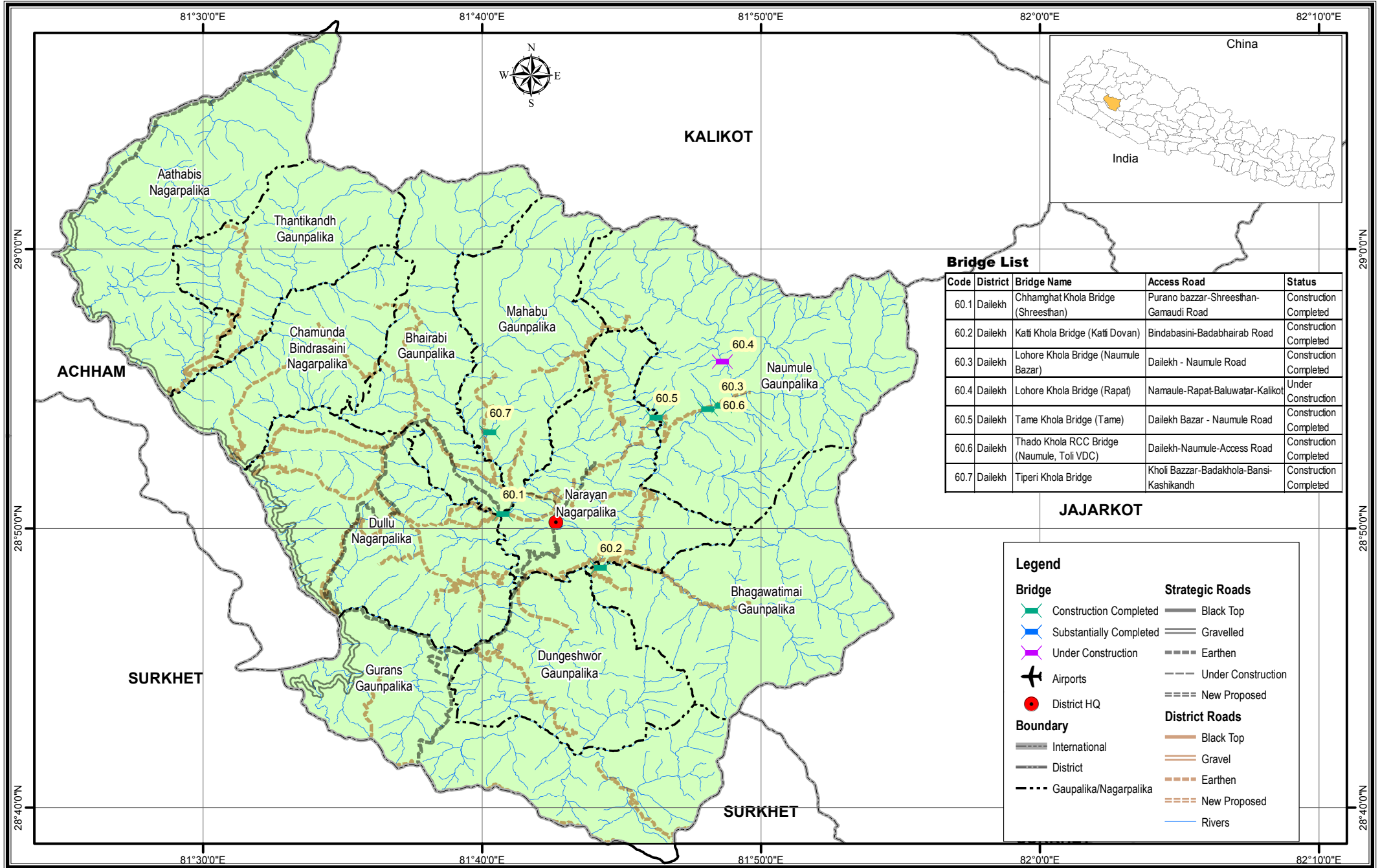


Bridge Inventory Map

Dailekh District



Bridge List

Code	District	Bridge Name	Access Road	Status
60.1	Dailekh	Chhamghat Khola Bridge (Shreesthan)	Purano bazaar-Shreesthan-Gamaudi Road	Construction Completed
60.2	Dailekh	Kati Khola Bridge (Kati Dovan)	Bindabasini-Badabhairab Road	Construction Completed
60.3	Dailekh	Lohore Khola Bridge (Naumule Bazar)	Dailekh - Naumule Road	Construction Completed
60.4	Dailekh	Lohore Khola Bridge (Rapat)	Namaule-Rapat-Baluwatar-Kalikot	Under Construction
60.5	Dailekh	Tame Khola Bridge (Tame)	Dailekh Bazar - Naumule Road	Construction Completed
60.6	Dailekh	Thado Khola RCC Bridge (Naumule, Toi VDC)	Dailekh-Naumule-Access Road	Construction Completed
60.7	Dailekh	Tiperi Khola Bridge	Kholi Bazaar-Badakhola-Bansi-Kashikandh	Construction Completed

JAJARKOT

Legend

- | | |
|-------------------------|------------------------|
| Bridge | Strategic Roads |
| Construction Completed | Black Top |
| Substantially Completed | Gravelled |
| Under Construction | Earthen |
| Airports | Under Construction |
| District HQ | New Proposed |
| Boundary | District Roads |
| International | Black Top |
| District | Gravel |
| Gaunpalika/Nagarpalika | Earthen |
| | New Proposed |
| | Rivers |



Local Roads Bridge Support Unit (LRBSU)
Manbhawan, Lalitpur

Date: 5/4/2018